



# Mississippi State Guard

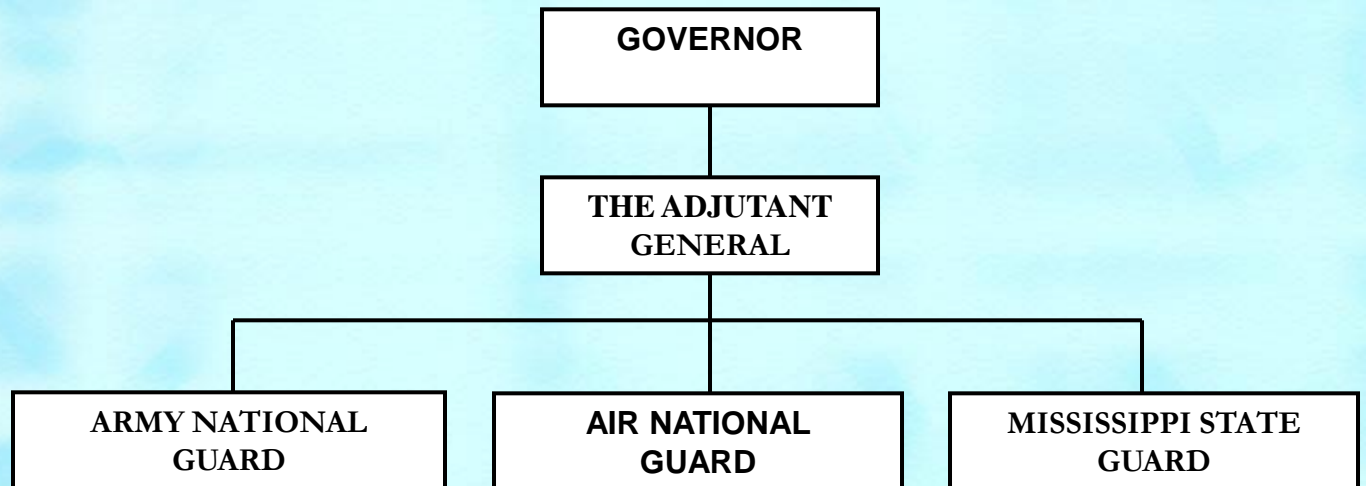
BG William B. Lee  
Commanding



Mississippi State Guard

# Organization and Function

## LINE OF AUTHORITY



Mississippi State Guard

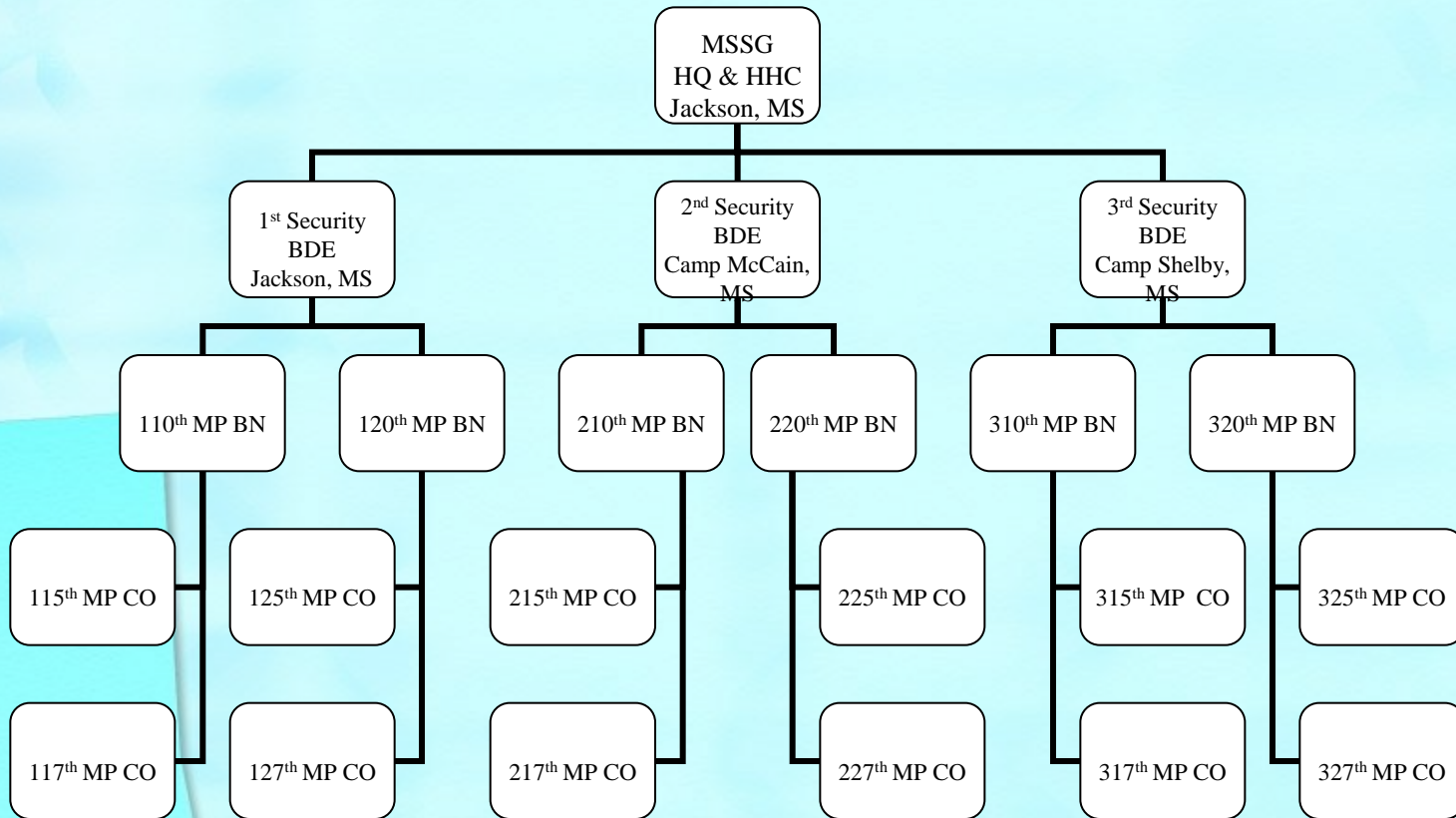
# METL

- Natural or man-made disaster relief operations/ARC shelter operation assistance/security.
- Limited Civil Disturbance assistance to law enforcement agencies. (Area Security/Vehicle or personnel checkpoint)
- External physical security of key facilities when other means are inadequate.
- Security and operation for National Guard facilities when the National Guard is mobilized.
- Any duties assigned by The TAG within the laws of the State of Mississippi.





# Mississippi State Guard Organization



Mississippi State Guard

# Mobilization

- Most recent Hurricane Isaac (August 28, 2012)
- Provided security teams for JFH while the JOC was operational (1 Week)
- Operate under the Task Force concept.
  - Expandable / Collapsible command structure in line with Incident Command System (ICS) concept
  - Depending on size of force required to accomplish missions assigned



# MOB / DEMOB Center

- Process soldiers for deployment (SRP)
- CG will appoint TF Commander
- G-3 shop will distribute missions to brigades
- Brigades will establish TF Teams based on missions



# Organizational C2

- Task Force command maintains all C2 functions for teams which become autonomous from their respective brigades.
- Individual brigades no longer have C2 of their soldiers.
- All communications and or site visits will go through and be approved by the TF Command.





MSSG HQ  
Jackson

TF Command  
Forward CP  
Location TBD

Team #1

Team #2

Team #3

Mississippi State Guard



# Demobilization (DEMOB)

- O/O to end mission, all teams will report back to MOB / DEMOB Center for processing. (No Exceptions)
- When released all individuals will report back to respective brigades.
- AARs are due from all teams through TF Command to the G-3 NLT 7 days after release from SAD.



# Questions ?



Mississippi State Guard